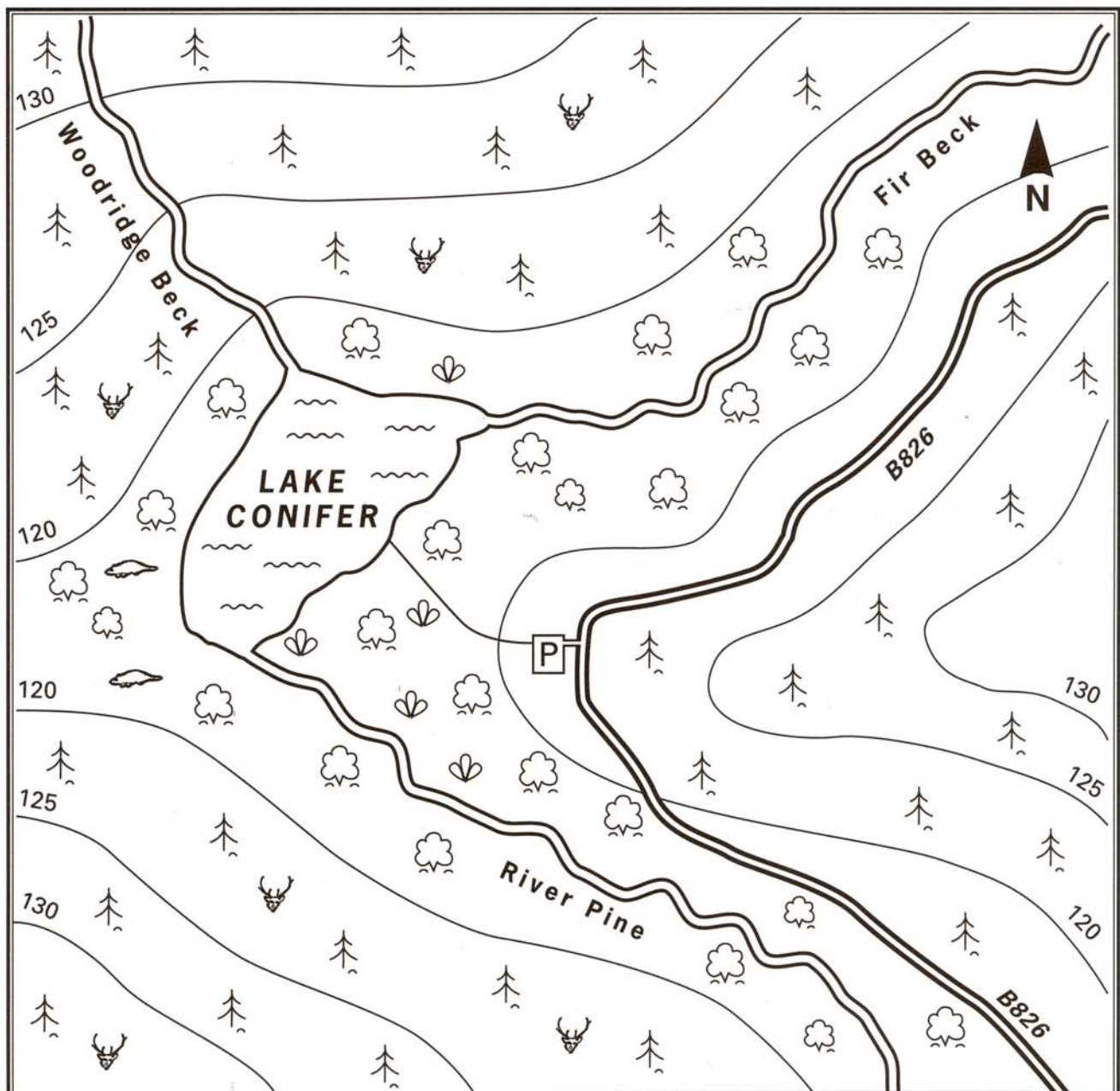
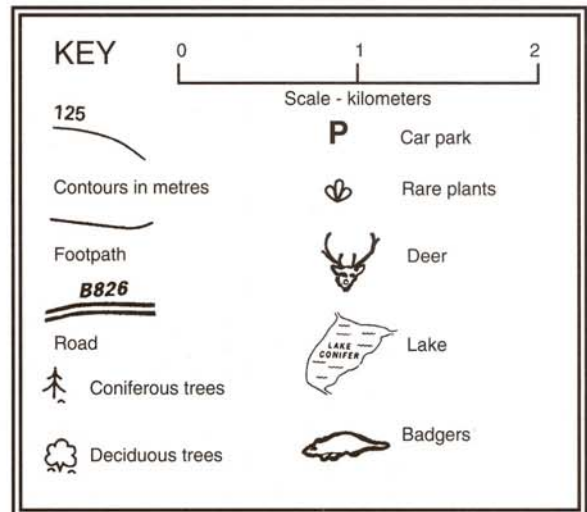


It has been decided that Woodridge Forest is to be opened up to the public. You have been given the job of redesigning the area shown on the map with a budget of

£200,000.

*Now look at
SHEET 2.*



As you can see from the sketch map of Woodridge Forest the trees are coniferous and deciduous. The coniferous trees are used for timber and for every tree felled two are planted.

The deciduous trees encourage a wide variety of wildlife to the area and add to the landscaping of different types of trees around the lake and along the river bank. Woodridge Forest is a well managed forest. The foresters make sure the trees are properly looked after and take an active part in wildlife conservation.



You are going to redesign the forest area shown on the map for visitors. Your budget is £200,000.

Work in a group to discuss and make notes about each of the following:

- the existing map and its features
- minimal disruption to wildlife and the forest's natural setting
- the list of facilities and their cost
- essential facilities for visitors
- select the facilities you have decided to include in your project and calculate the cost
- decide where you will place the new facilities on the map



Use the empty circles to design symbols for each new facility you have decided to include.



FACILITIES	COST
1. CAR PARK (100 CARS)	£15,000
2. TOILET BLOCK	£50,000
3. CARAVAN SITE (50 VANS)	£60,000
4. CAMPING SITE (150 TENTS)	£5,000
5. RESTAURANT	£150,000
6. PICNIC AREA	£20,000
7. BOATING	£10,000
8. ACCESS ROAD (COST PER KM)	£20,000
9. HIDE (TO OBSERVE ANIMALS)	£5,000
10. FOOTPATH (COST PER KM)	£8,000
11. ADVENTURE PLAYGROUND	£30,000
12. FOOTBRIDGE	£2,000

